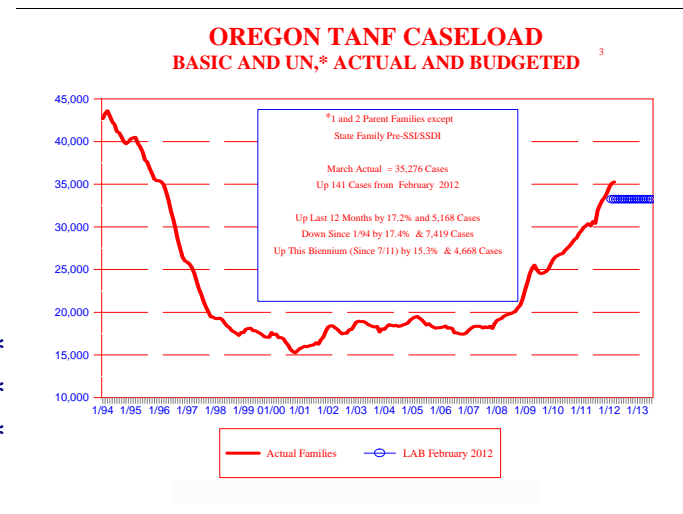
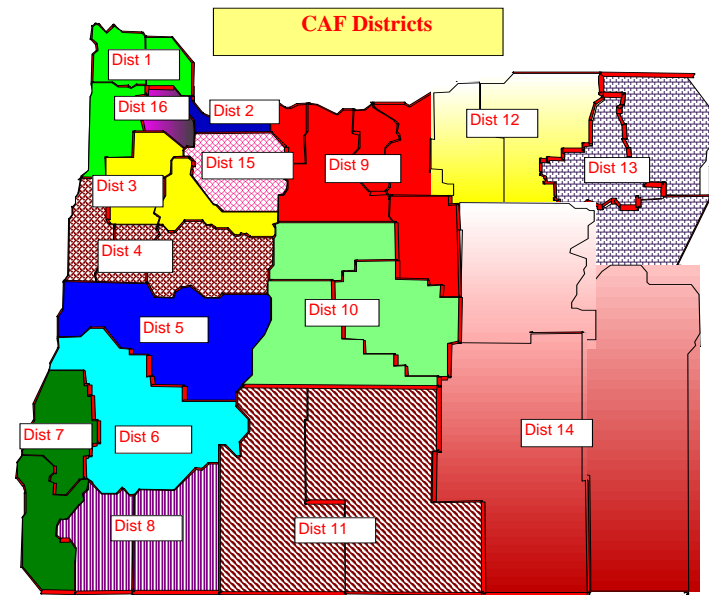


OREGON CHILDREN, ADULTS AND FAMILIES DATA CHARTS - MARCH 2012

<u>Page</u>	<u>Description</u>
2	County Profiles by District
3	TANF Combined Caseload
4	State Family Pre-SSI/SSDI Caseload
5	Job Placements
6	TANF Basic - Actual and Budgeted
7	TANF UN - Actual and Budgeted
8	TANF Combined Change by District
9	TANF Percent Change since 10/07 by District
10	TANF Monthly Intake by Type of Action
11	Percent of Statewide TANF Totals by District
12	Oregon SNAP Households
13	Oregon SNAP Households Monthly Comparison
14	Oregon SNAP Households Percent Monthly Change
15	Oregon SNAP Participants
16	Oregon SNAP Participants Two Year Comparison
17	Employment Related Day Care Cases
18	Children in Substitute Care by Branch*
19	Children in Substitute Care by District*
20	Percent ADP Change by District*
21	Yearly Percent ADP Change by District*
22	Child Welfare Over Past Ten Years Statewide*
23	Total Foster Care Over Past Eleven Years by District*
24	Total Foster Care Over Past Eleven Years by District*
25	Total Foster Care Over Past Eleven Years by District*
26	Median Months to Adoption by Branch*



*Due to a systems change, current data is not available. The charts will be updated when the data becomes available.

COUNTY PROFILES by DISTRICT

DISTRICT	COUNTY	POPULATION ¹	POPULATION UNDER AGE 18 ²	% OF POP. UNDER AGE 18	% of POP. OVER AGE 65 ²	UNEMP. RATE ⁴ FEB 2012	POVERTY RATE ⁵	MEDIAN HH INCOME ⁵	HIGH SCHOOL GRAD RATE ³	COLLEGE DEGREE RATE ³	MARRIED COUPLES W/CHILDREN ³
1	Columbia	49,625	11,565	23.3%	14.5%	10.6%	13.4%	\$50,707	85.6%	14.0%	25.8%
	Clatsop	37,145	7,617	20.5%	17.2%	8.7%	14.8%	\$44,234	85.6%	19.1%	19.5%
	Tillamook	25,255	5,048	20.0%	21.4%	9.5%	16.0%	\$40,797	84.1%	17.6%	17.5%
2	Multnomah	741,925	150,822	20.3%	10.8%	8.6%	18.0%	\$48,018	85.6%	30.7%	17.9%
3	Marion	318,150	83,726	26.3%	13.1%	10.5%	17.9%	\$44,725	79.3%	19.8%	24.7%
	Polk	75,965	18,510	24.4%	15.1%	8.6%	15.7%	\$49,504	85.5%	25.3%	24.0%
	Yamhill	99,850	24,751	24.8%	13.8%	9.8%	14.7%	\$50,288	82.8%	20.6%	28.2%
4	Linn	117,340	28,222	24.1%	15.7%	11.8%	18.1%	\$43,019	81.9%	13.4%	23.0%
	Benton	85,995	15,335	17.8%	12.6%	6.1%	19.1%	\$49,156	93.1%	47.4%	22.2%
	Lincoln	46,155	7,996	17.3%	22.4%	10.4%	17.0%	\$38,302	84.9%	20.8%	15.3%
5	Lane	353,155	69,730	19.7%	15.5%	9.2%	19.1%	\$40,545	87.5%	25.5%	19.6%
6	Douglas	107,795	21,933	20.3%	21.6%	13.5%	19.5%	\$36,991	81.0%	13.3%	20.5%
7	Coos	62,960	12,016	19.1%	21.9%	11.5%	19.1%	\$36,216	81.6%	15.0%	17.7%
	Curry	22,335	3,472	15.5%	28.6%	12.9%	16.0%	\$36,994	81.7%	16.4%	14.5%
8	Jackson	203,950	44,233	21.7%	18.1%	12.3%	15.7%	\$40,603	85.0%	22.3%	21.0%
	Josephine	82,820	16,767	20.2%	22.8%	13.2%	18.8%	\$36,102	81.8%	14.1%	18.2%
9	Hood River	22,625	5,816	25.7%	12.8%	7.9%	13.0%	\$49,490	78.2%	23.1%	27.8%
	Gilliam	1,880	350	18.6%	23.0%	8.4%	11.4%	\$45,827	89.3%	13.4%	22.5%
	Wheeler	1,435	264	18.4%	29.5%	9.8%	19.8%	\$31,983	79.4%	14.3%	17.5%
	Wasco	25,300	5,880	23.2%	18.0%	9.9%	15.7%	\$41,711	82.1%	15.7%	21.1%
	Sherman	1,765	350	19.8%	22.3%	11.2%	13.7%	\$49,295	84.3%	19.0%	23.8%
10	Deschutes	158,875	36,315	22.9%	15.3%	13.5%	14.8%	\$46,631	88.4%	25.0%	23.7%
	Jefferson	21,845	5,459	25.0%	15.8%	15.5%	21.1%	\$40,888	76.5%	13.7%	25.0%
	Crook	20,855	4,495	21.6%	20.9%	16.4%	17.4%	\$39,867	80.5%	12.6%	24.3%
11	Klamath	66,580	14,749	22.2%	17.6%	13.5%	17.4%	\$37,370	81.5%	15.9%	20.7%
	Lake	7,885	1,496	19.0%	21.0%	16.2%	20.4%	\$36,167	79.6%	15.5%	21.2%
12	Umatilla	76,580	20,333	26.6%	13.0%	10.0%	15.5%	\$43,691	77.8%	16.0%	24.8%
	Morrow	11,270	3,160	28.0%	13.2%	8.7%	16.7%	\$45,652	74.1%	11.0%	28.9%
13	Baker	16,215	3,276	20.2%	22.5%	12.7%	20.0%	\$37,868	80.3%	16.4%	20.1%
	Union	25,980	5,900	22.7%	17.2%	10.8%	16.7%	\$41,191	85.6%	21.8%	22.0%
	Wallowa	6,995	1,344	19.2%	24.1%	13.8%	16.6%	\$38,522	87.5%	20.3%	21.5%
14	Malheur	31,445	7,997	25.4%	15.3%	11.1%	39.5%	\$32,412	71.0%	11.1%	26.6%
	Harney	7,375	1,632	22.1%	19.6%	16.6%	19.1%	\$36,441	81.2%	11.9%	22.7%
	Grant	7,450	1,398	18.8%	24.8%	17.8%	16.5%	\$39,792	84.6%	15.7%	22.2%
15	Clackamas	378,480	88,624	23.4%	14.1%	8.8%	10.4%	\$57,960	88.9%	28.4%	26.5%
16	Washington	536,370	135,820	25.3%	10.4%	7.8%	9.7%	\$60,555	88.9%	34.5%	27.6%

¹ Population data is the 2011 estimate from the Center for Population Research and Census at Portland State University.

² Persons under age 18 and over age 65 are estimates from the Center for Population Research and Census at PSU adjusted to the estimated population for 2011.

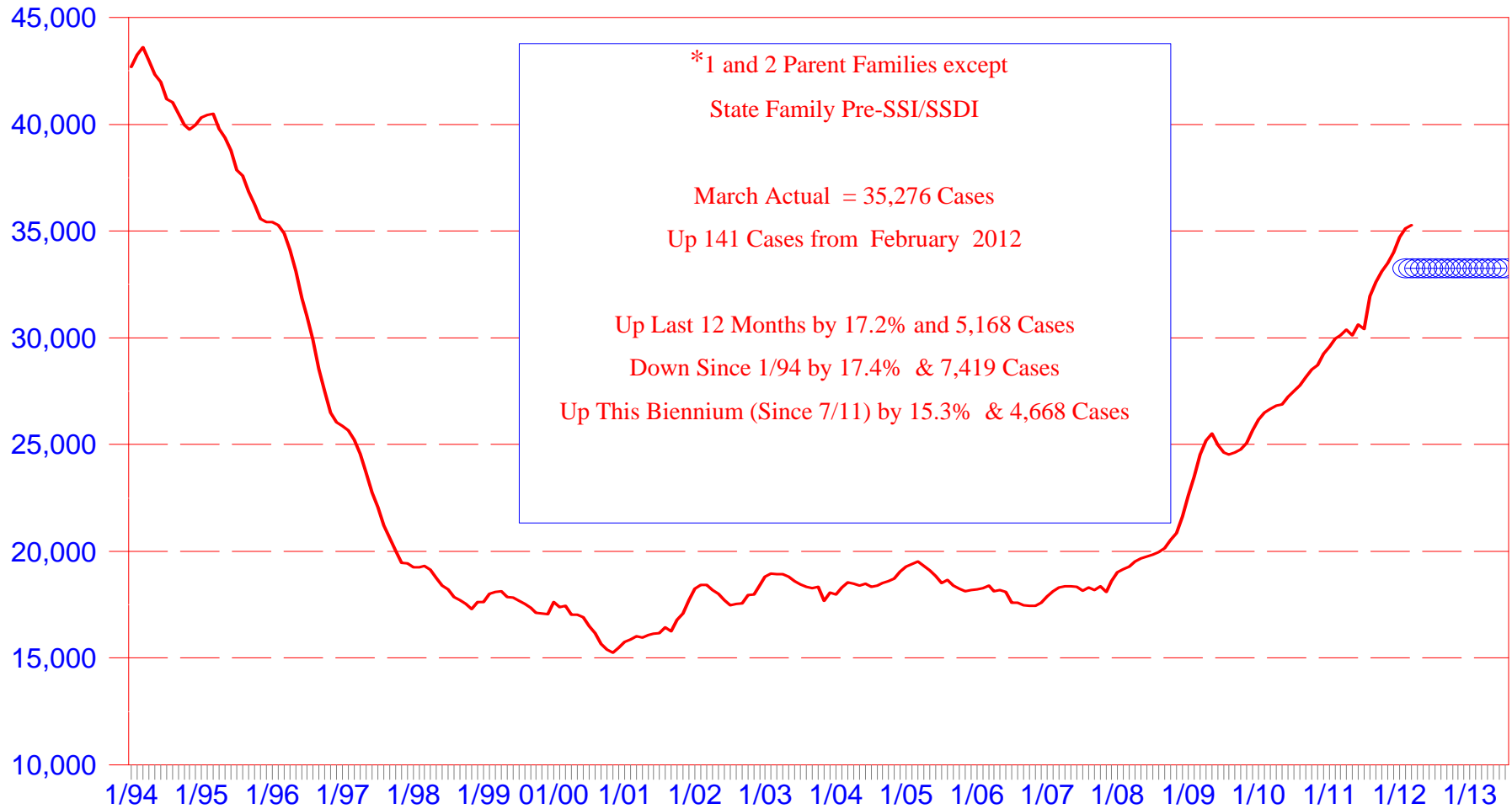
³ Data is from the U.S. Census Bureau, Census 2000

⁴ Unemployment rates are based upon data from the Oregon Employment Department. The rates are not seasonally adjusted.

⁵ Poverty rates and median household income are 2010 estimates from the US Census Bureau.

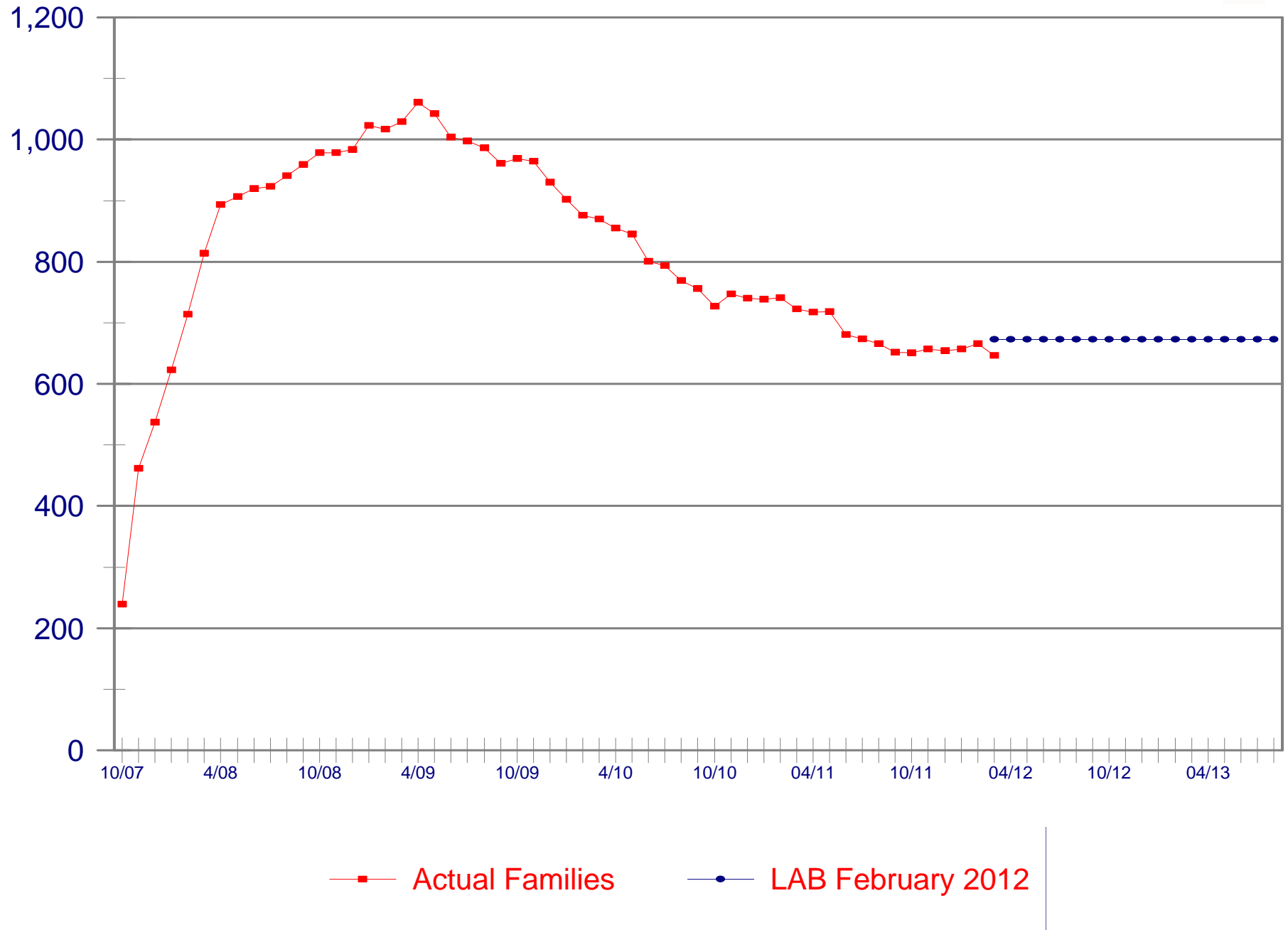
OREGON TANF CASELOAD

BASIC AND UN,* ACTUAL AND BUDGETED

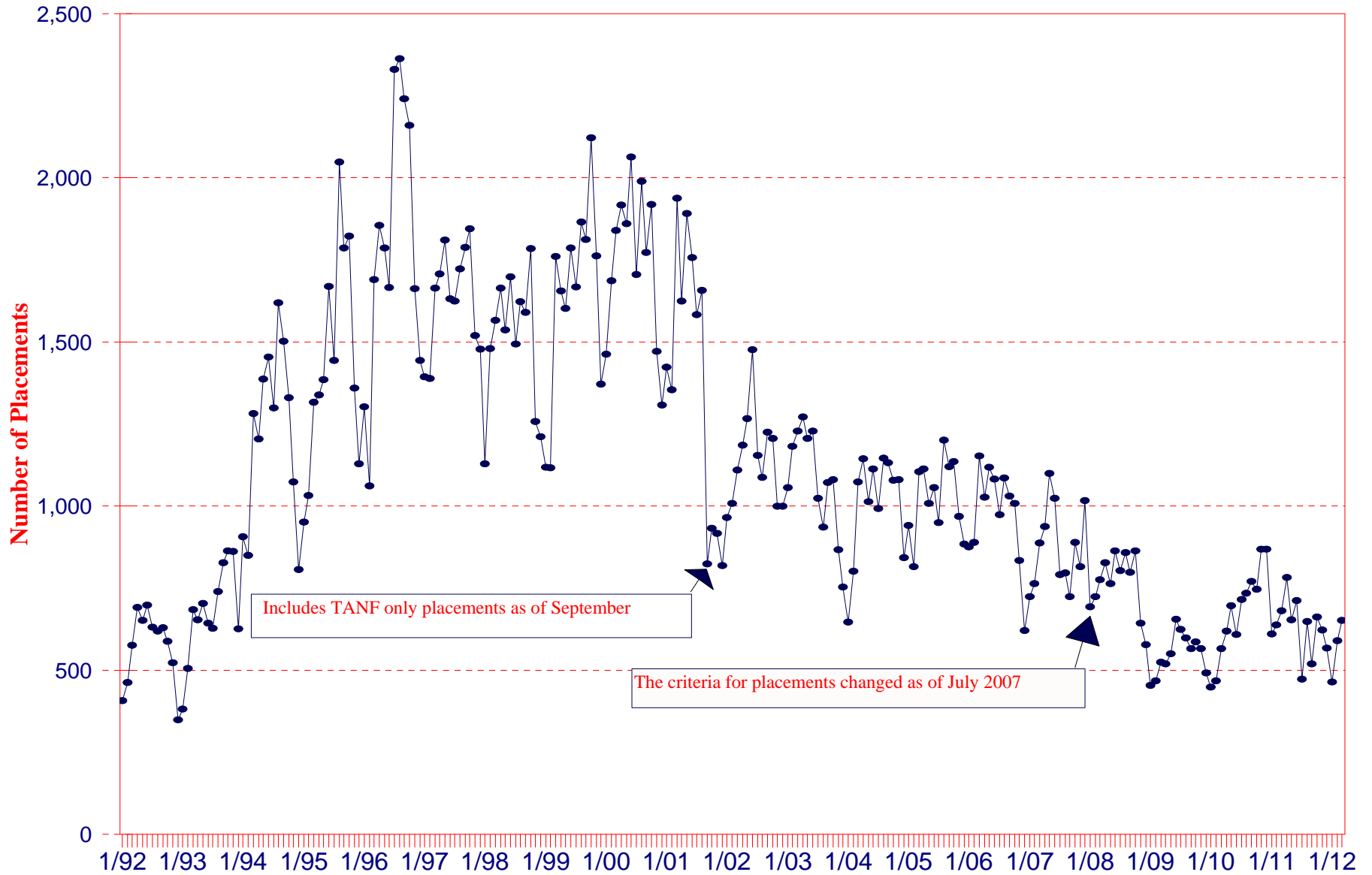


— Actual Families
 —○— LAB February 2012

STATE FAMILY PRE-SSI/SSDI CASELOAD

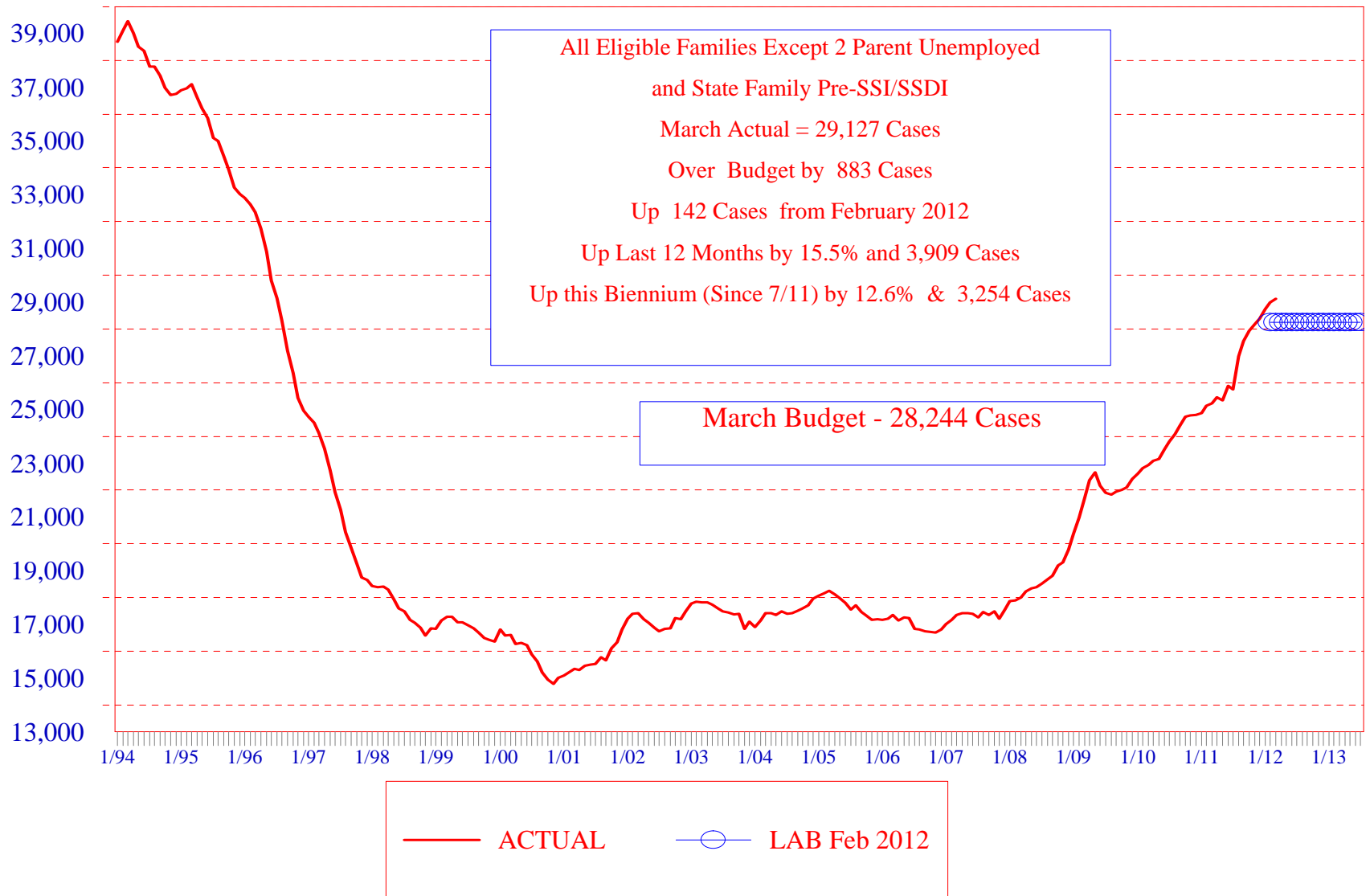


OREGON JOBS PROGRAM MONTHLY PLACEMENTS 1992 - 2012



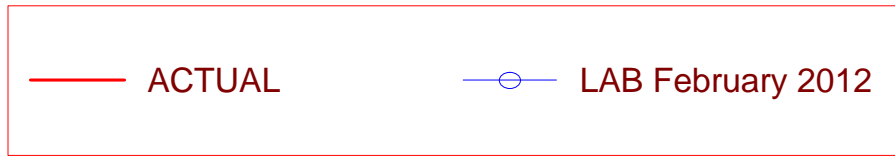
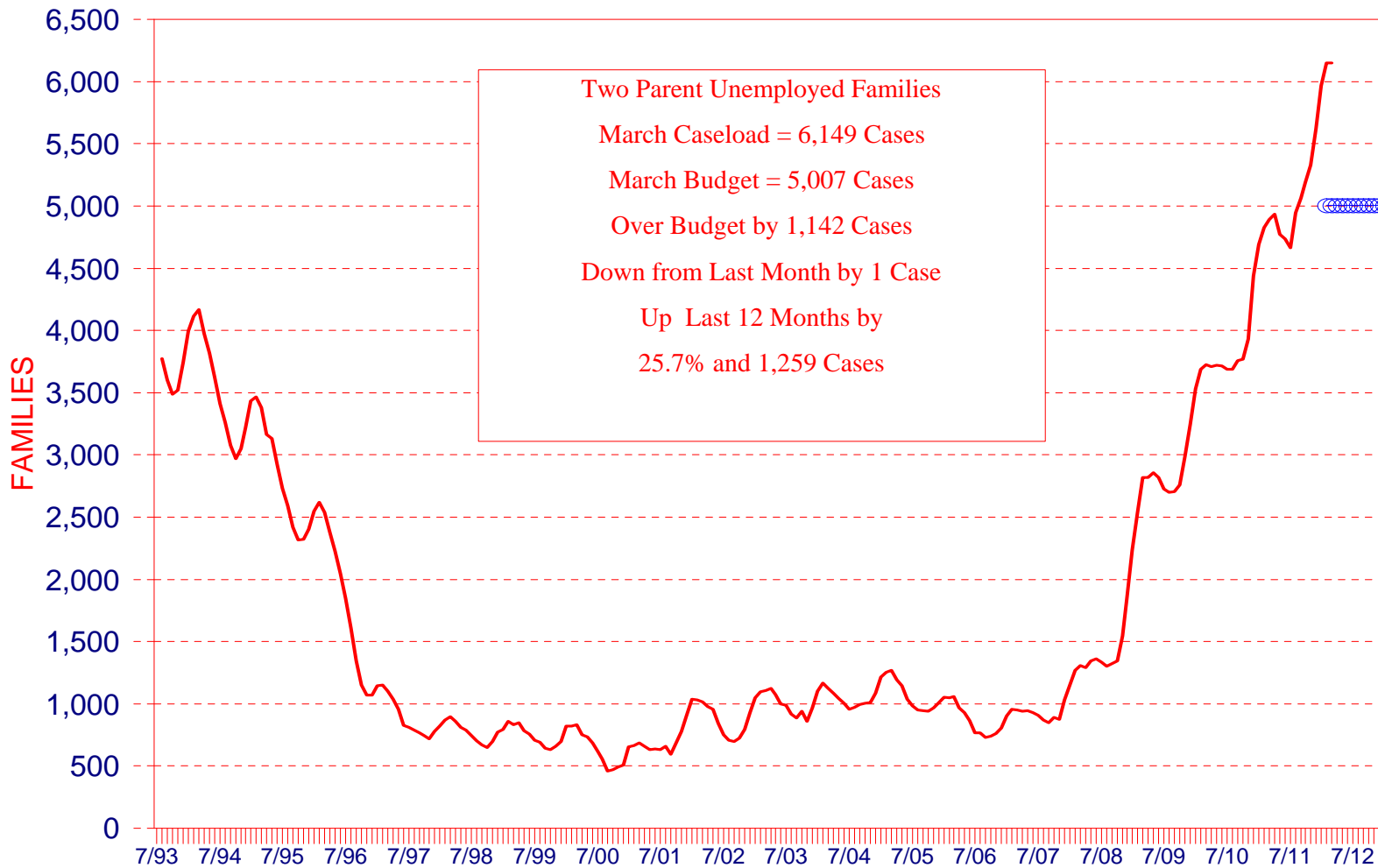
OREGON TANF BASIC CASELOAD

ACTUAL AND BUDGETED



OREGON TANF-UN CASELOAD

ACTUAL AND BUDGETED

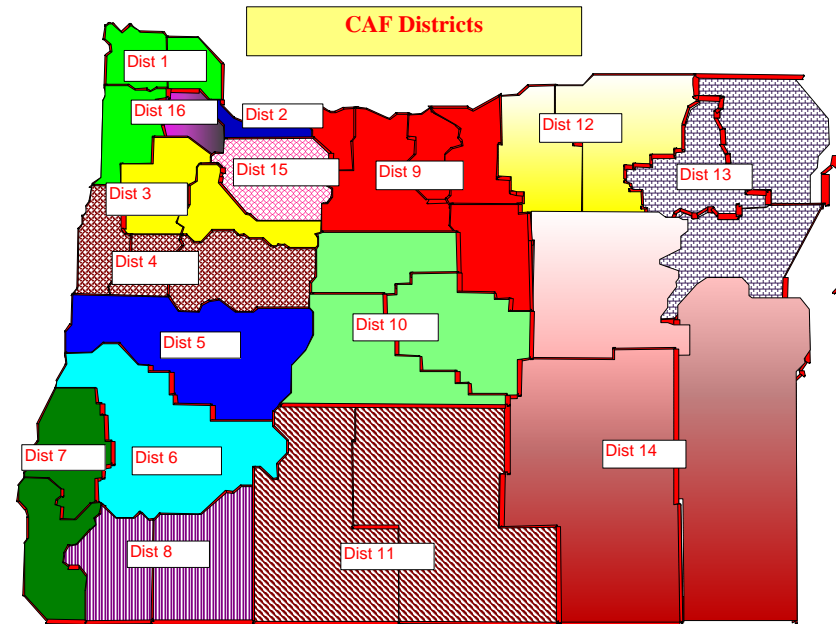
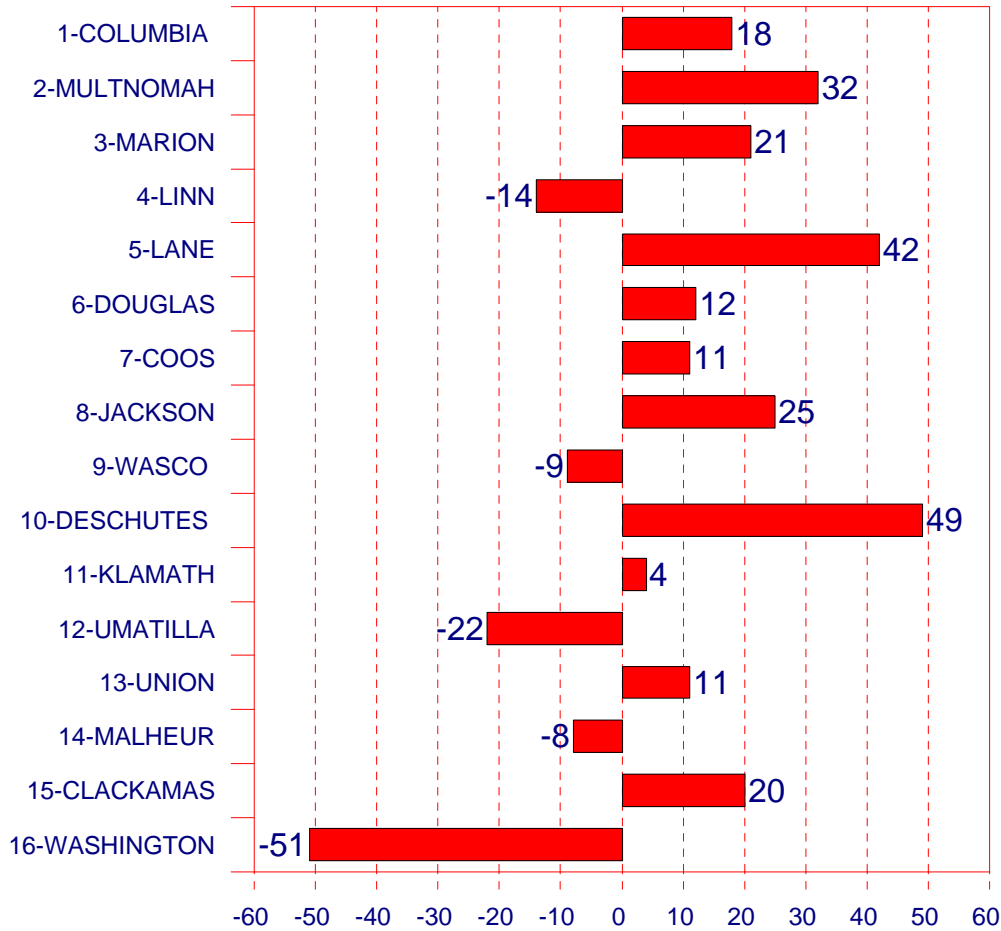


OREGON TANF BASIC & UN CASELOAD

COMBINED CHANGE THIS MONTH BY DISTRICT

March 2012

Districts*

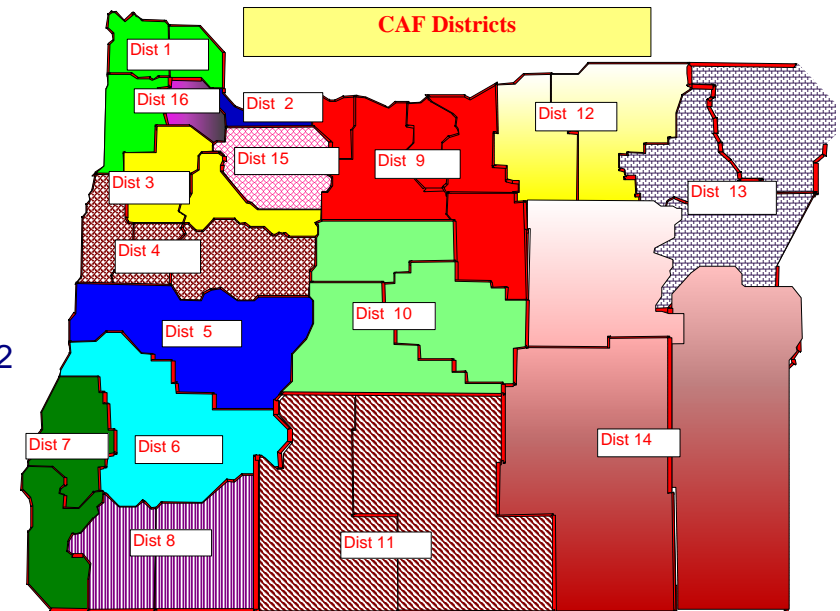
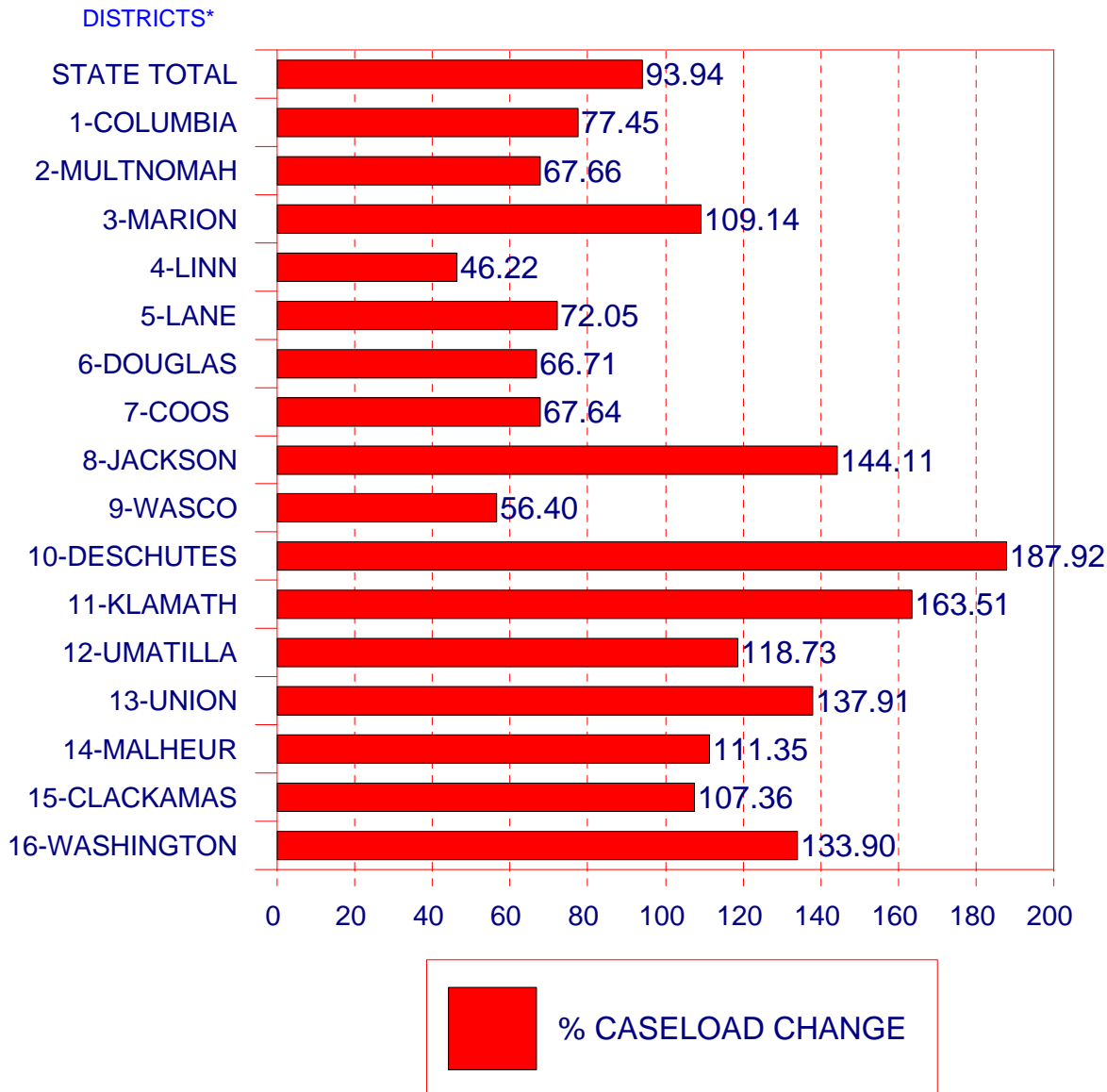


*District is listed by the most populous county in the geographic area. See page 2 for a complete listing of the counties.

OREGON TANF BASIC & UN CASELOAD % CHANGE SINCE 10/07 BY DISTRICT

MAP 9

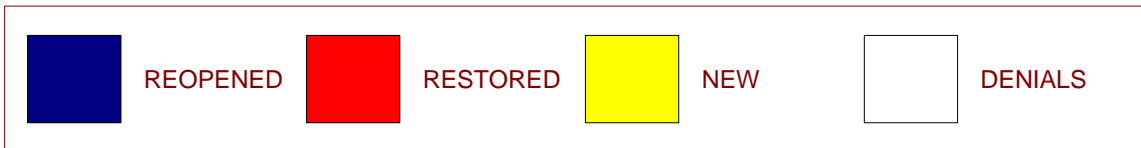
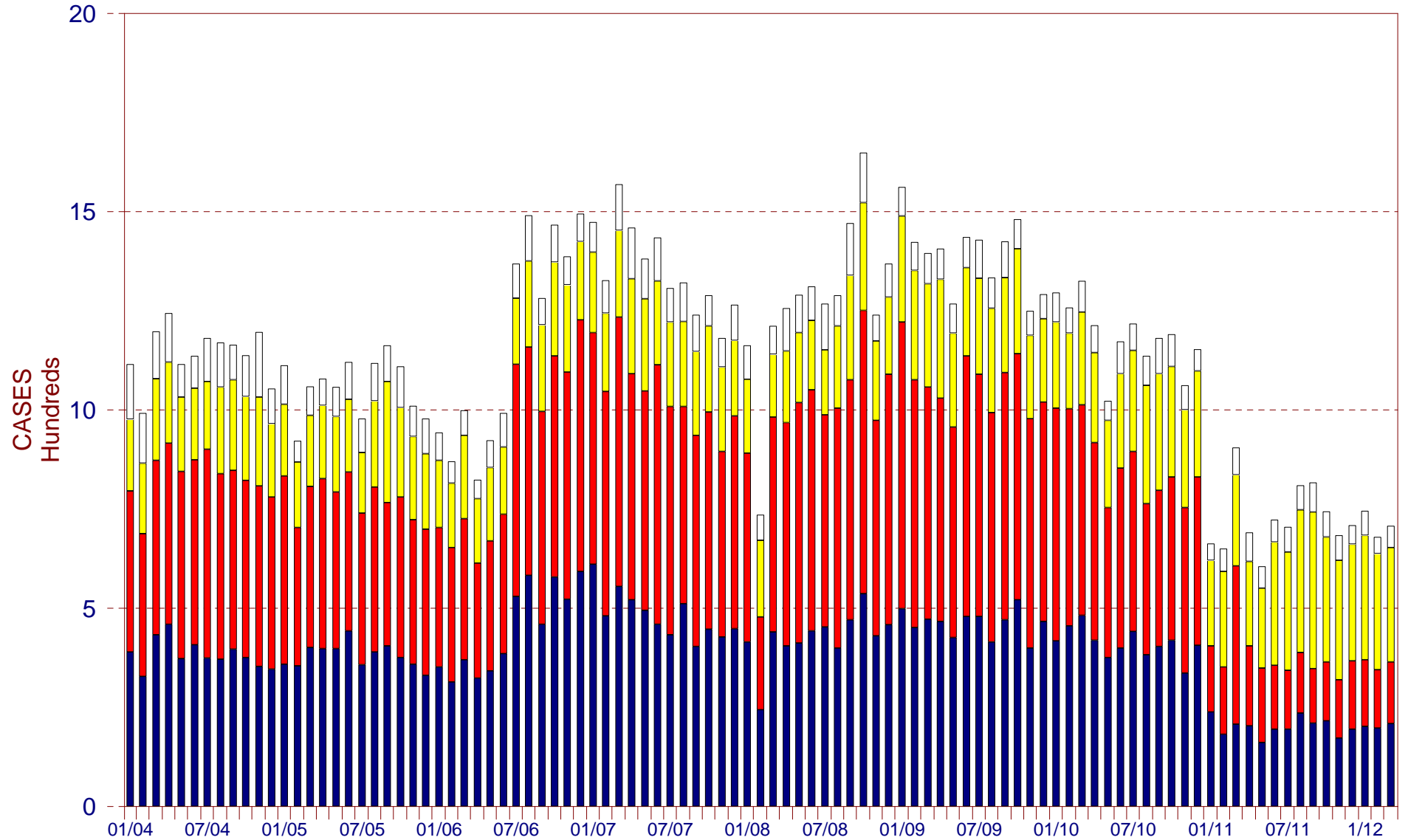
March 2012



*District is listed by the most populous county in the geographic area. See page 2 for a complete listing of the counties.

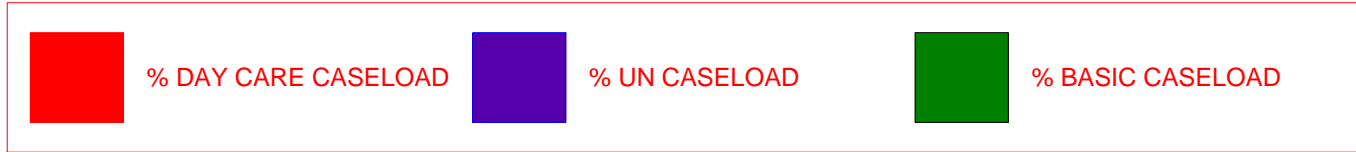
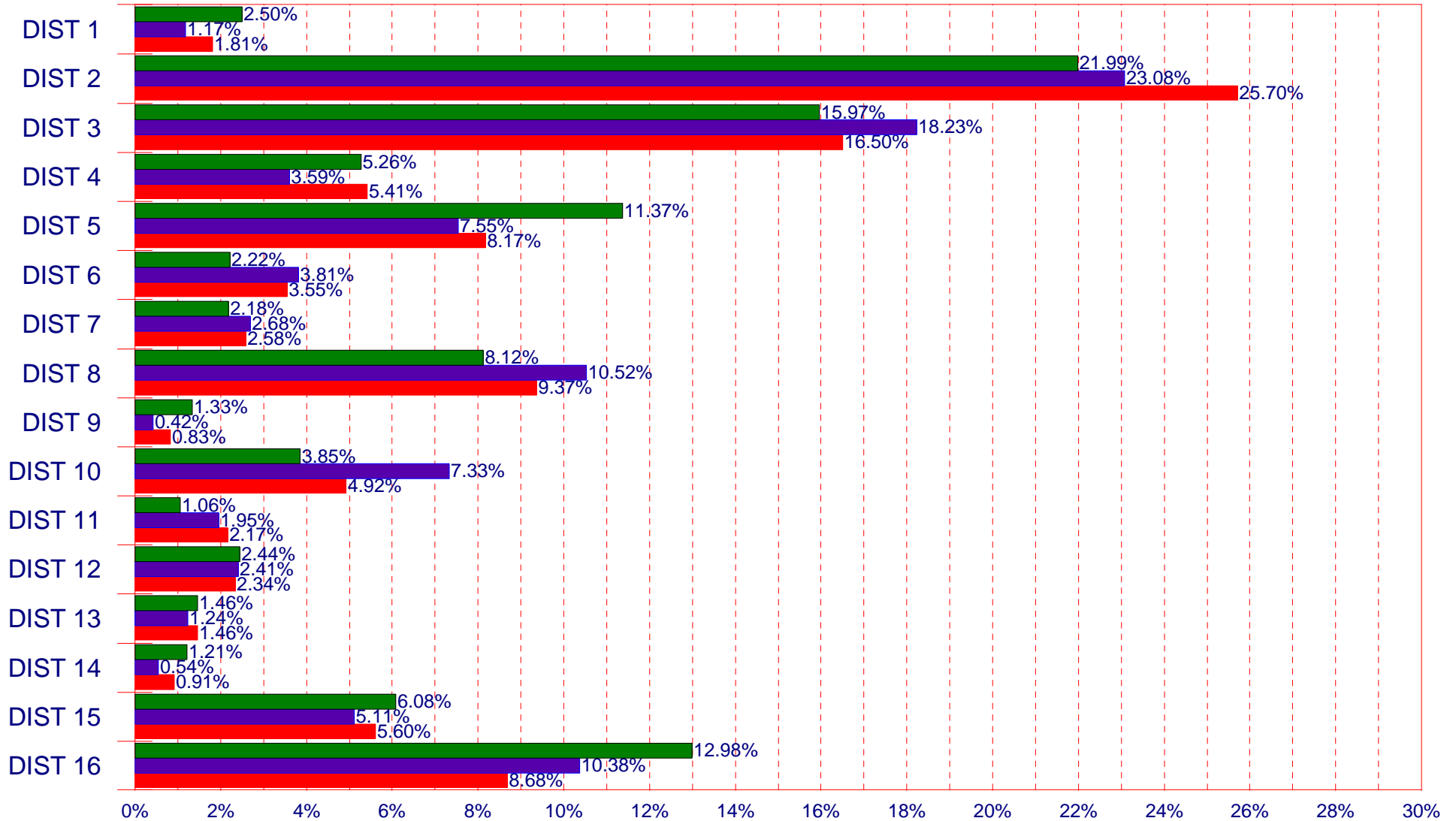
OREGON TANF MONTHLY INTAKE

BY TYPE OF ACTION

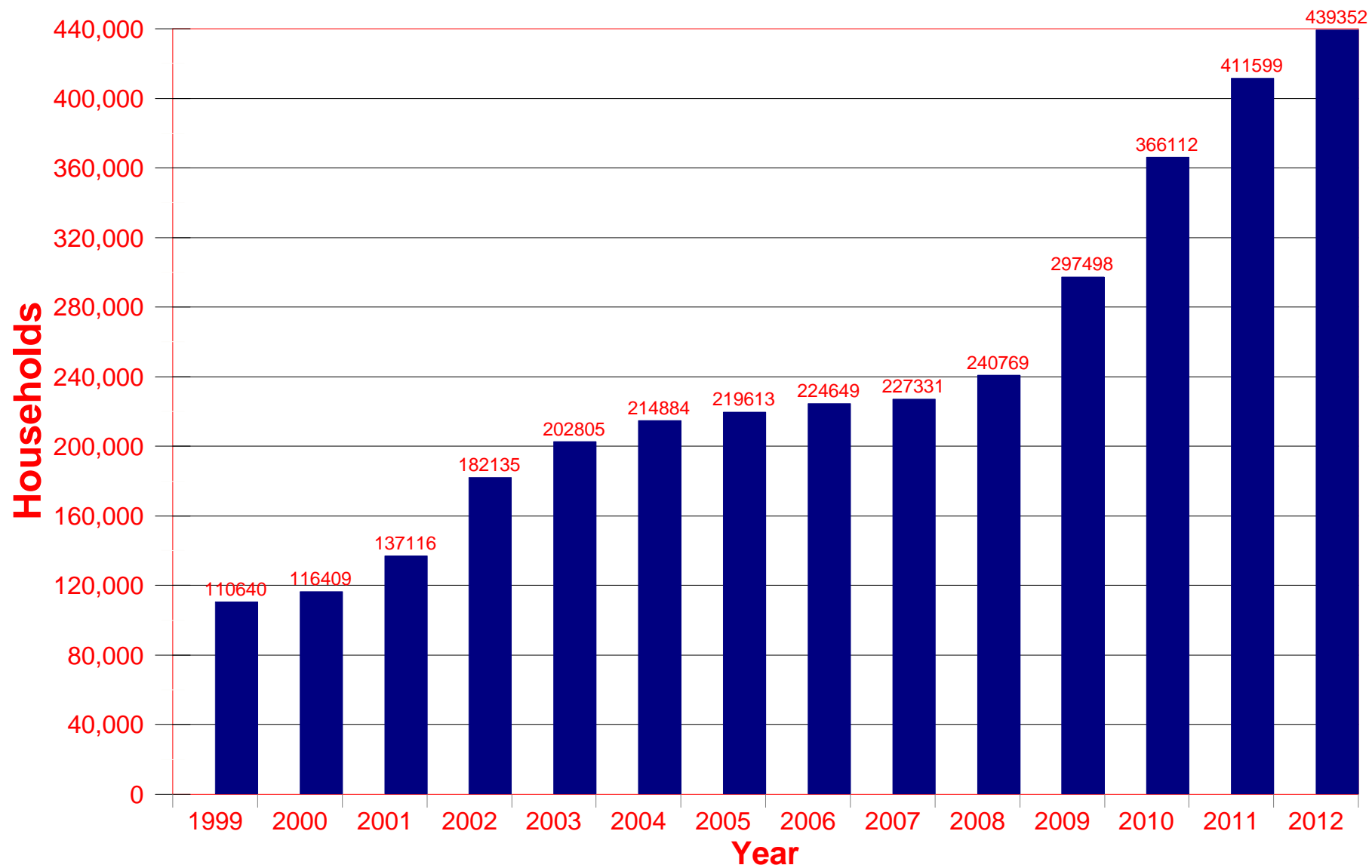


PERCENT OF STATEWIDE TOTALS ¹¹ BY DISTRICT

DISTRICTS



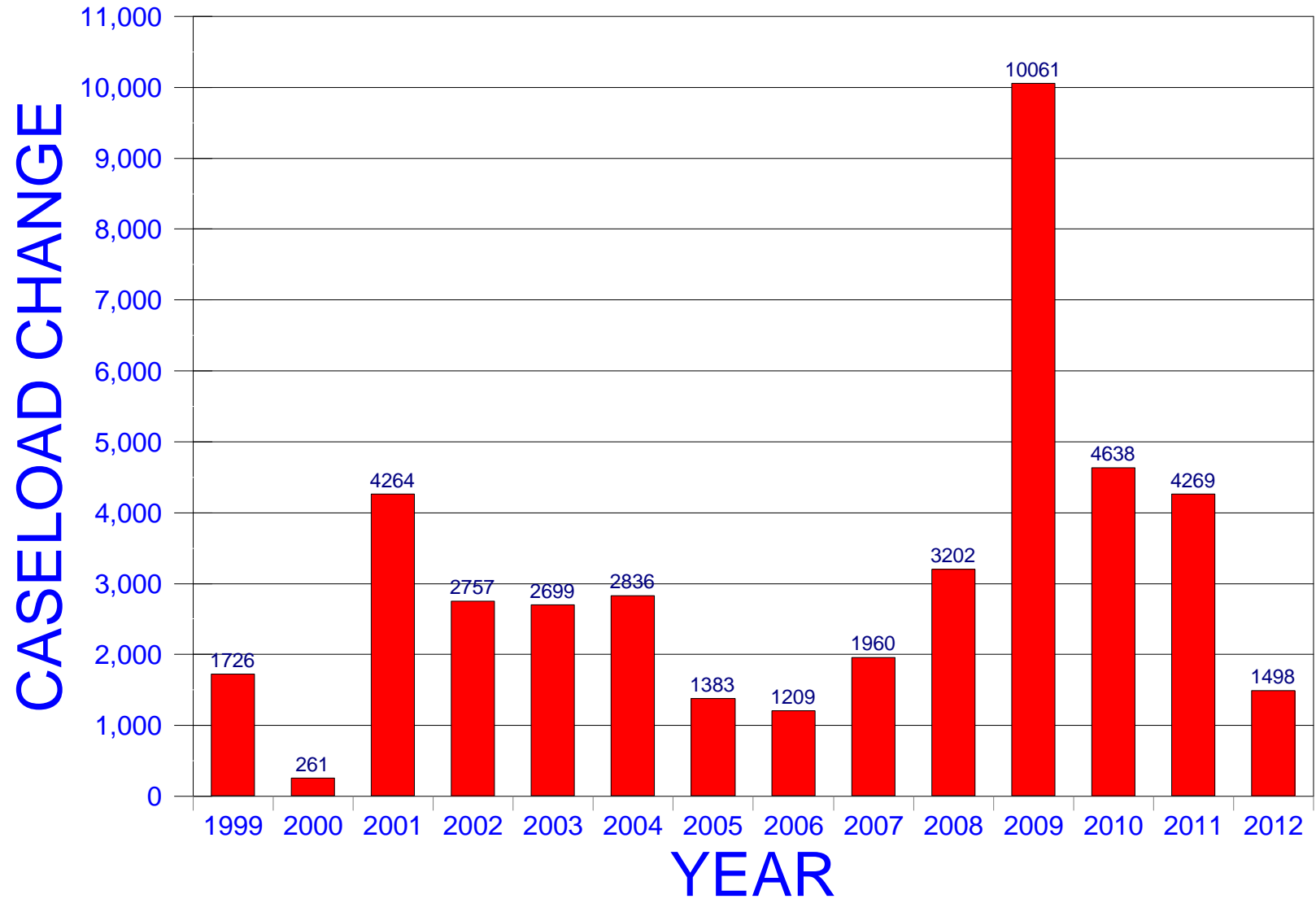
Oregon SNAP Households - March



OREGON SNAP HOUSEHOLDS

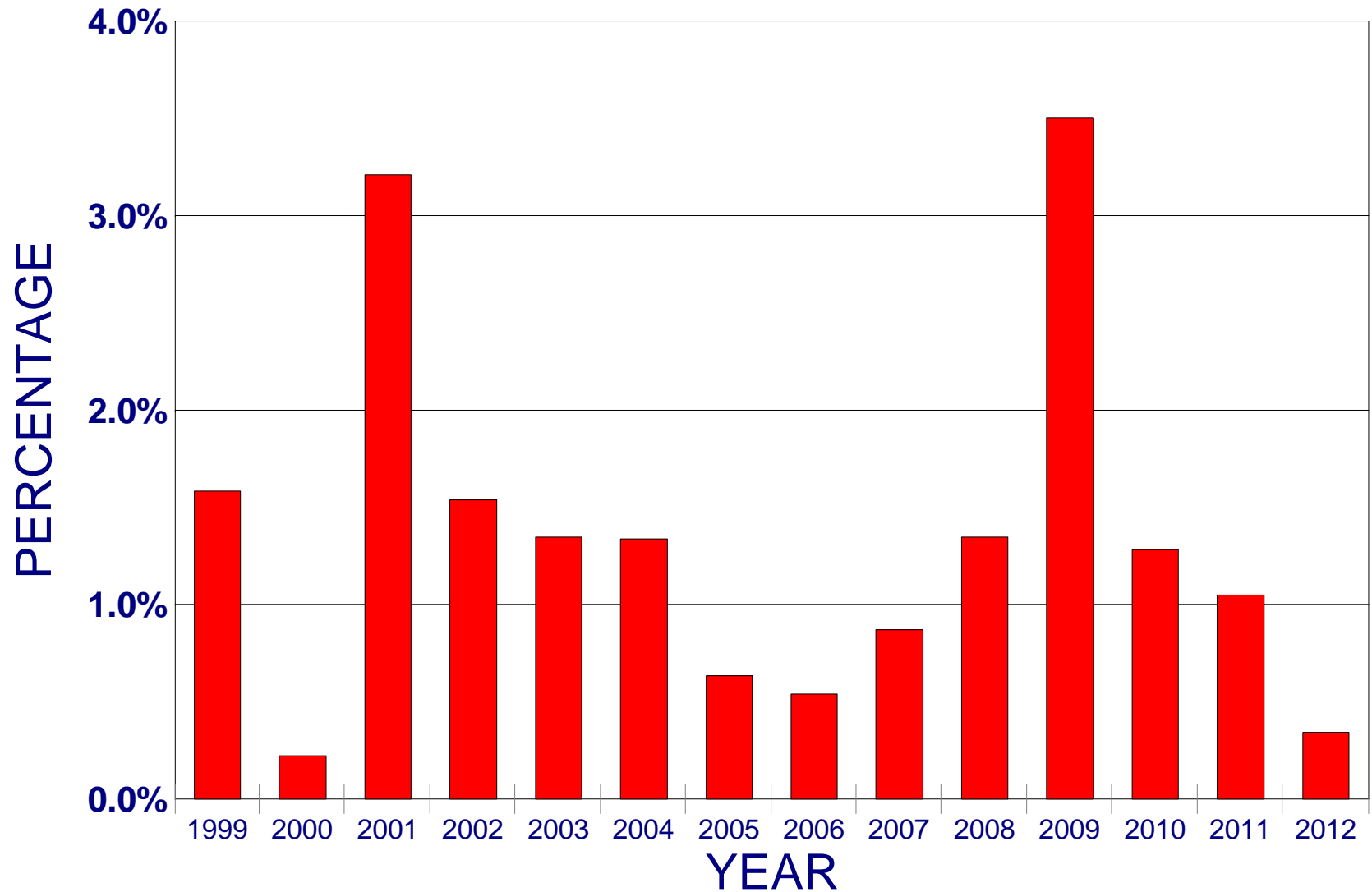
MONTHLY CASELOAD CHANGE - FEB-MAR

13

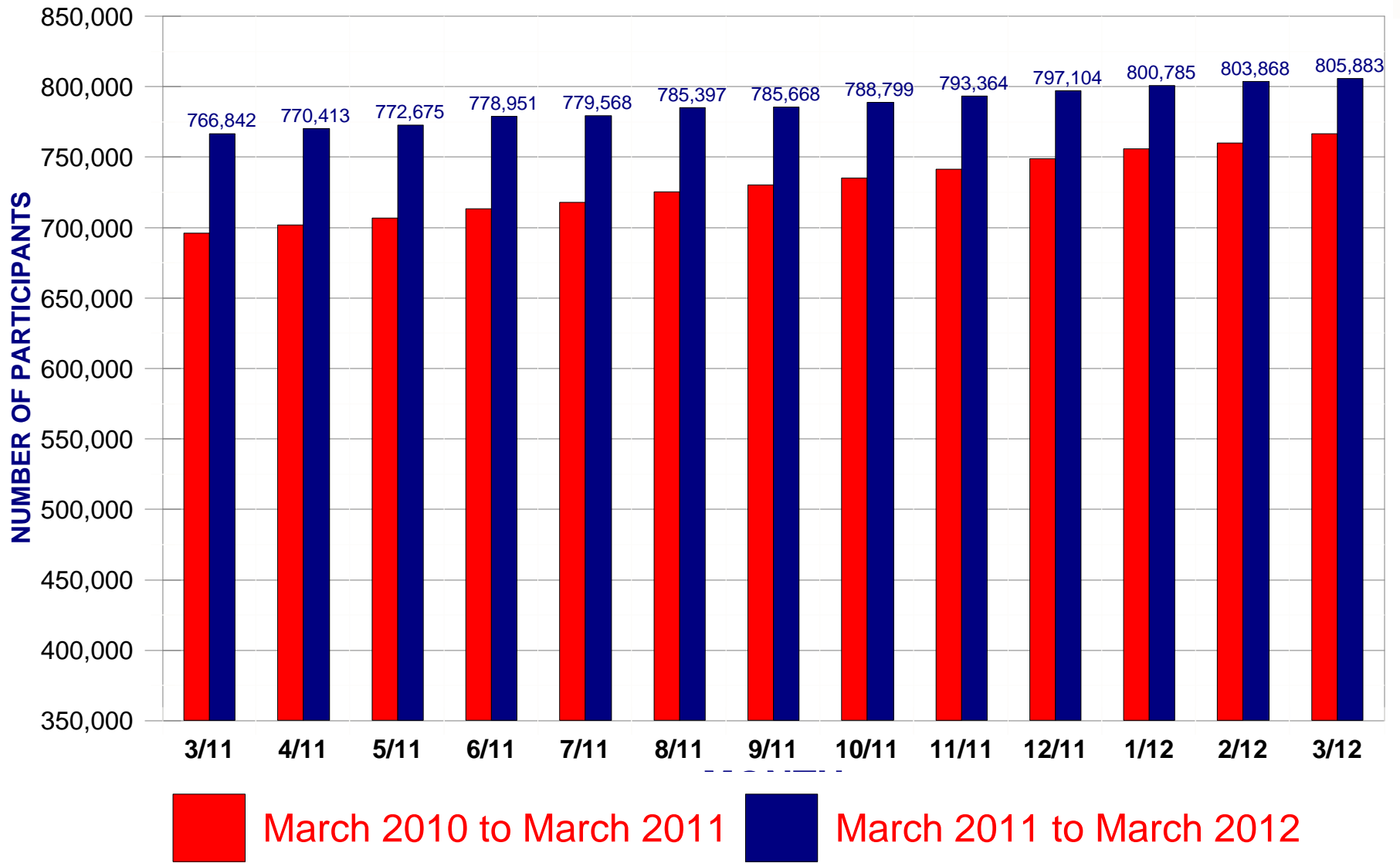


OREGON SNAP HOUSEHOLDS

% MONTHLY CASELOAD CHANGE - FEB-MAR

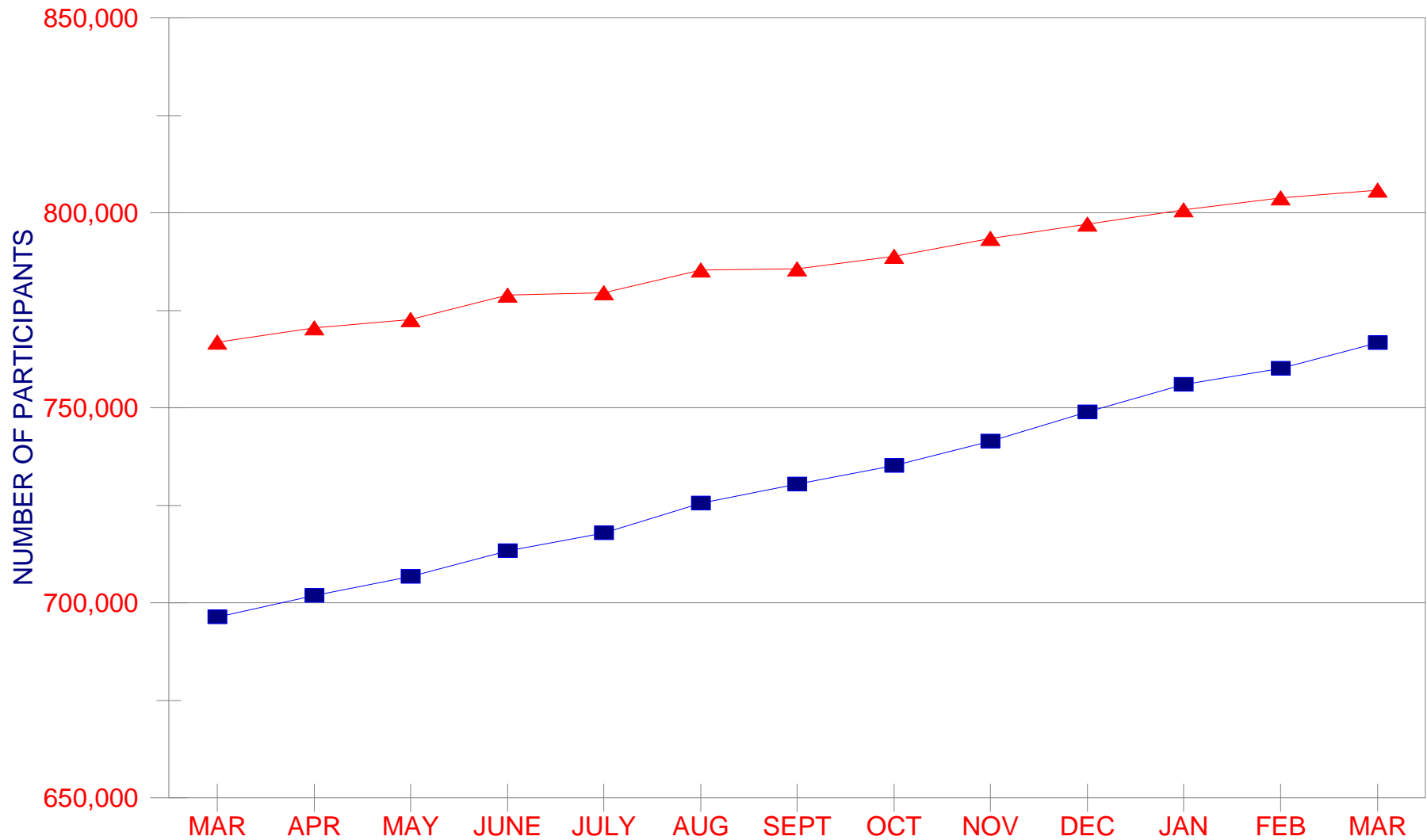


OREGON SNAP PARTICIPANTS



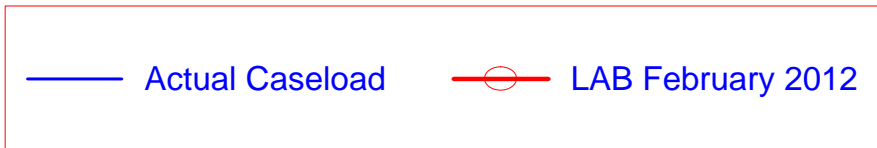
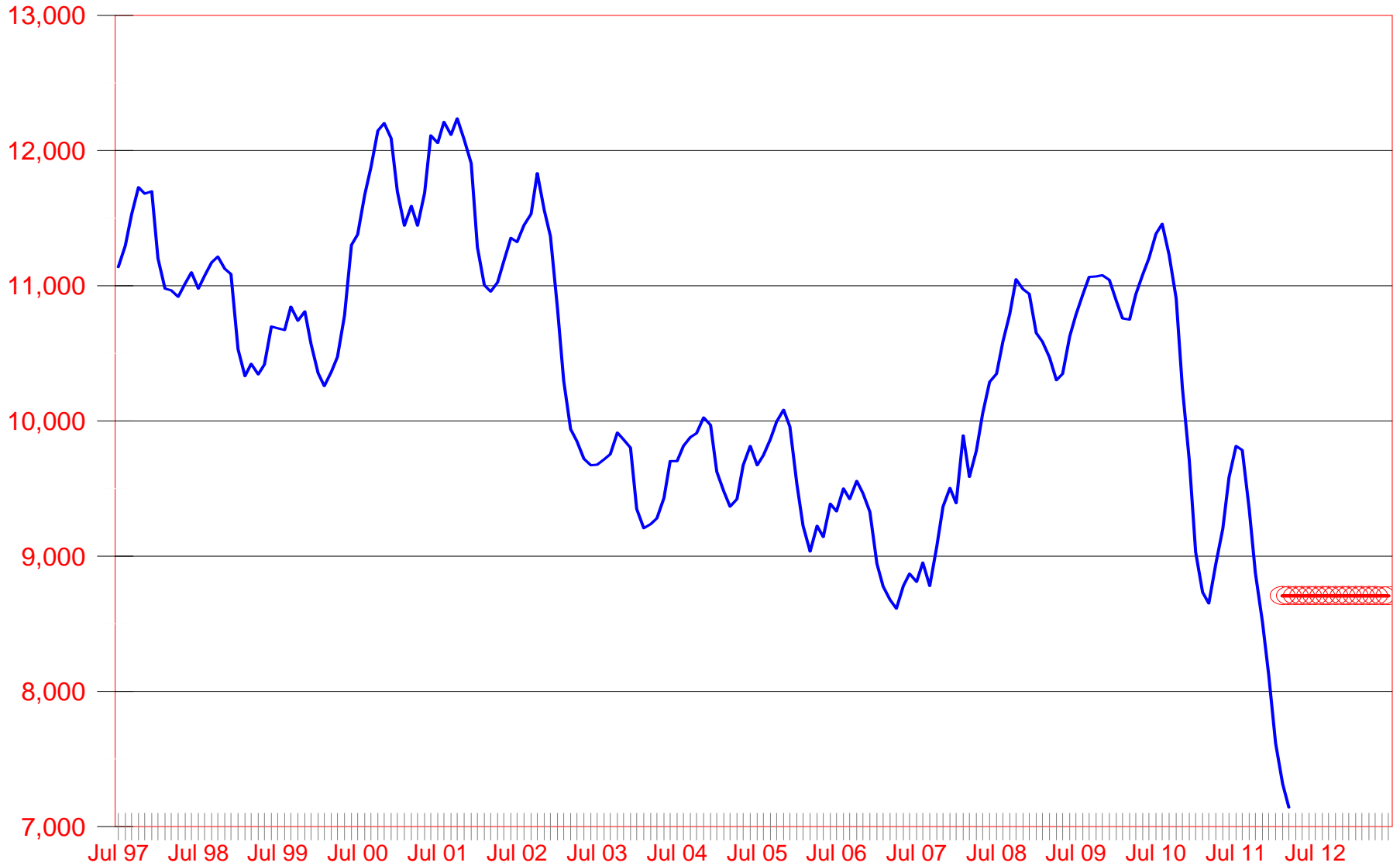
OREGON SNAP PARTICIPANTS

MARCH 2010 TO MARCH 2012



—▲— March 2011 to March 2012 —■— March 2010 to March 2011

ERDC CASES

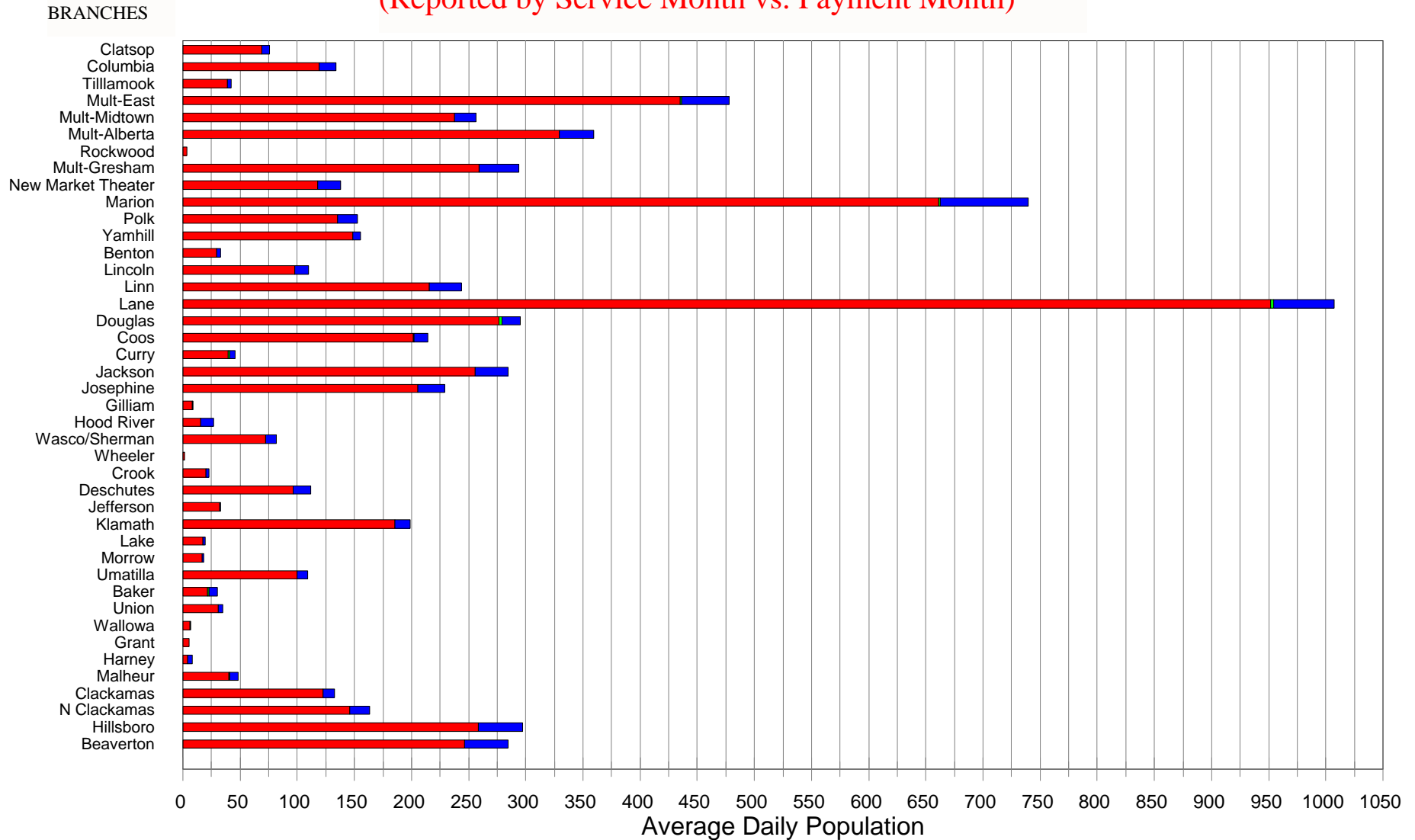


CHILD WELFARE - JUNE 2011

ADP* IN SUBSTITUTE CARE by BRANCH

18

(Reported by Service Month vs. Payment Month)



* Average Daily Population

** Includes Family Shelter Care, Family Foster Care, Relative Family Foster Care, and Family Group Home Care

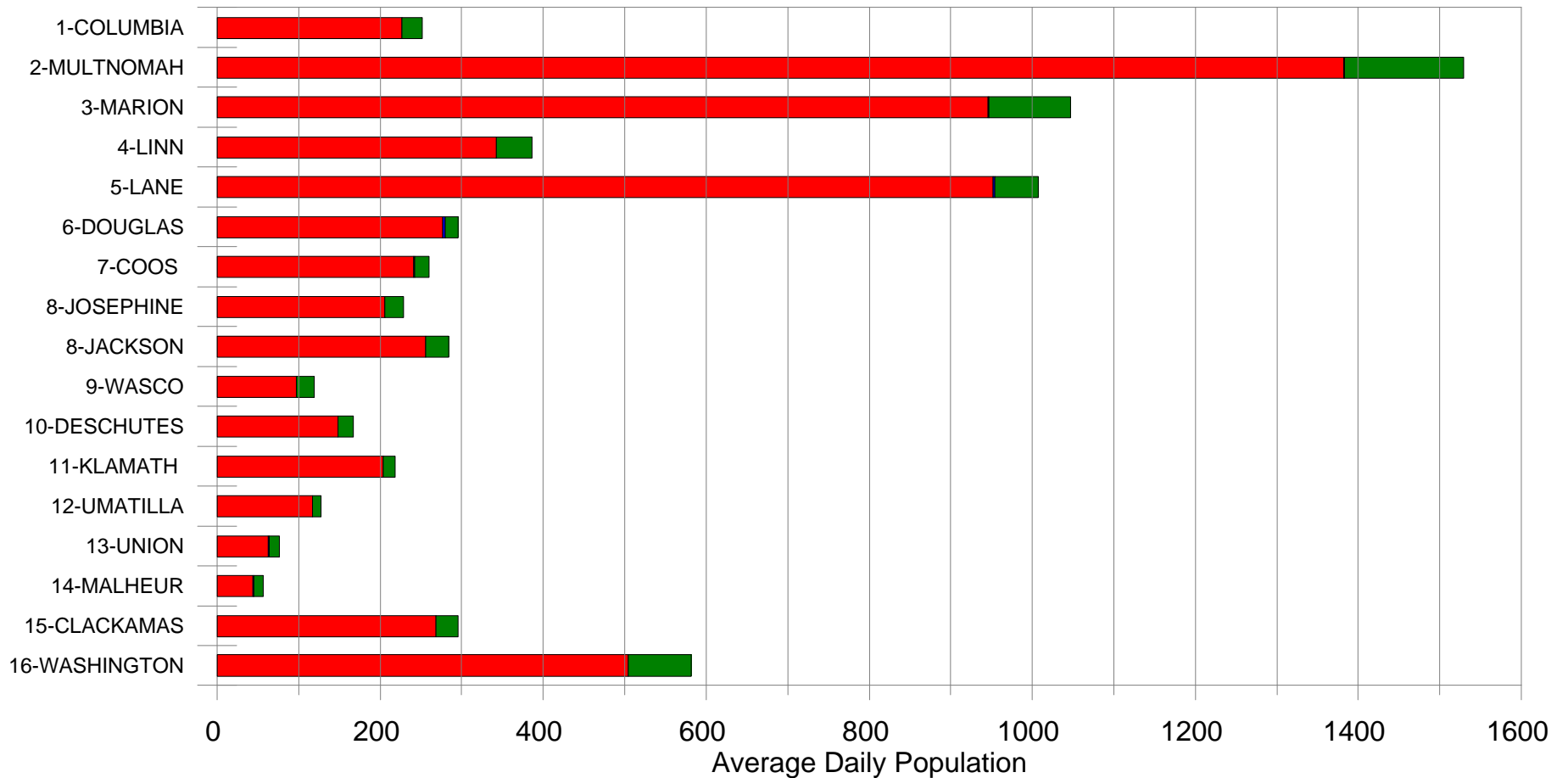
*** Includes Professional Shelter Care, Psychiatric Residential Treatment, Independent Living, and Residential Treatment

CHILD WELFARE - JUNE 2011

ADP* IN SUBSTITUTE CARE by DISTRICT

Districts****

(Reported by Service Month vs. Payment Month)



Paid Family Foster Care **



Non-Paid Family Foster Care **



Other Foster Care ***

* Average Daily Population

** Includes Family Shelter Care, Family Foster Care, Relative Family Foster Care, and Family Group Home Care

*** Includes Professional Shelter Care, Psychiatric Residential Treatment, Independent Living, and Residential Treatment

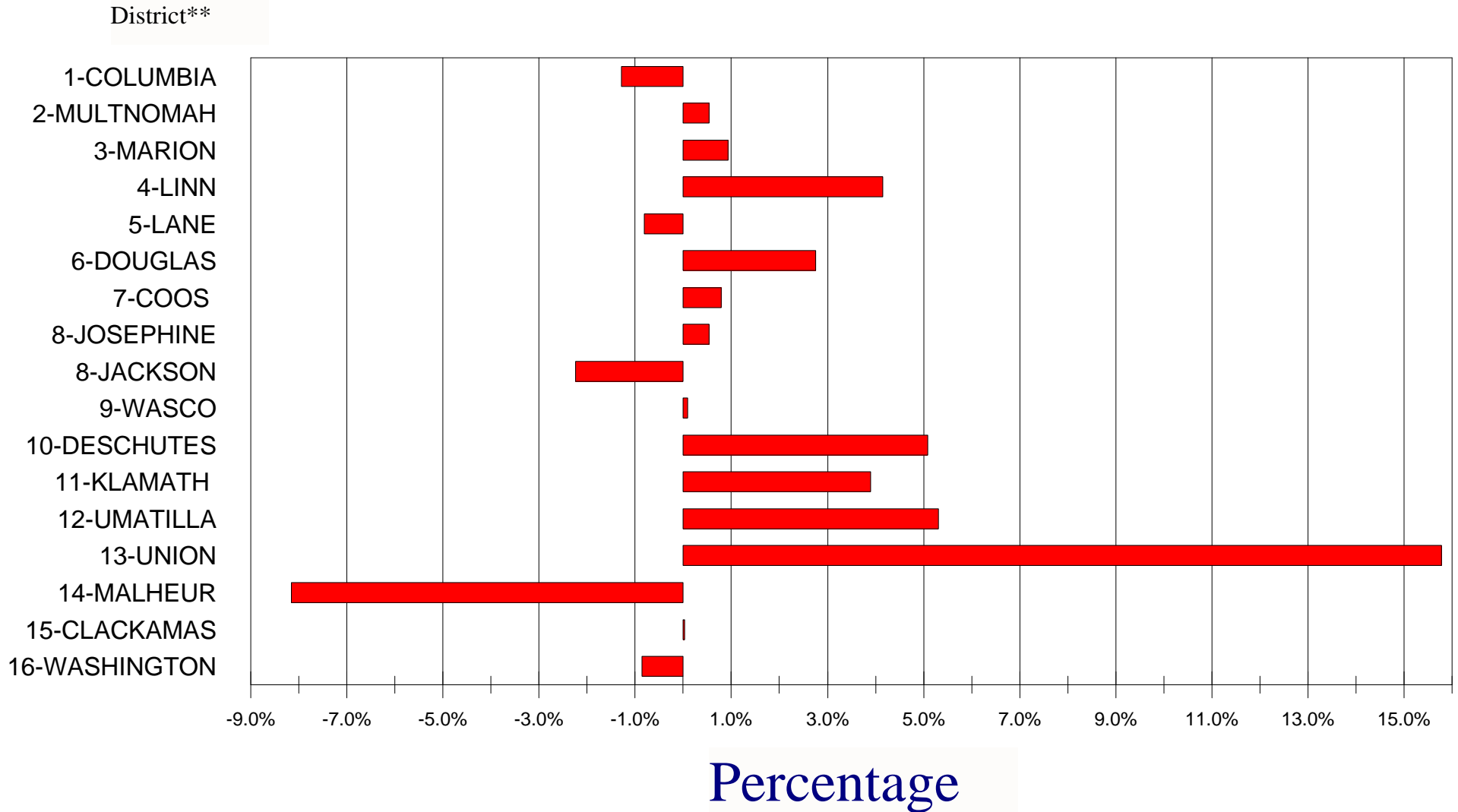
**** District is listed by the most populous county in the geographic area. See page 2 for a complete listing of the counties.

Percent ADP Change by DISTRICT*

Children in Substitute Care

May 2011 - June 2011

20



* Includes Paid & Non Paid Family Shelter Care, Family Foster Care, Relative Family Foster Care, Family Group Home Care and Residential TX

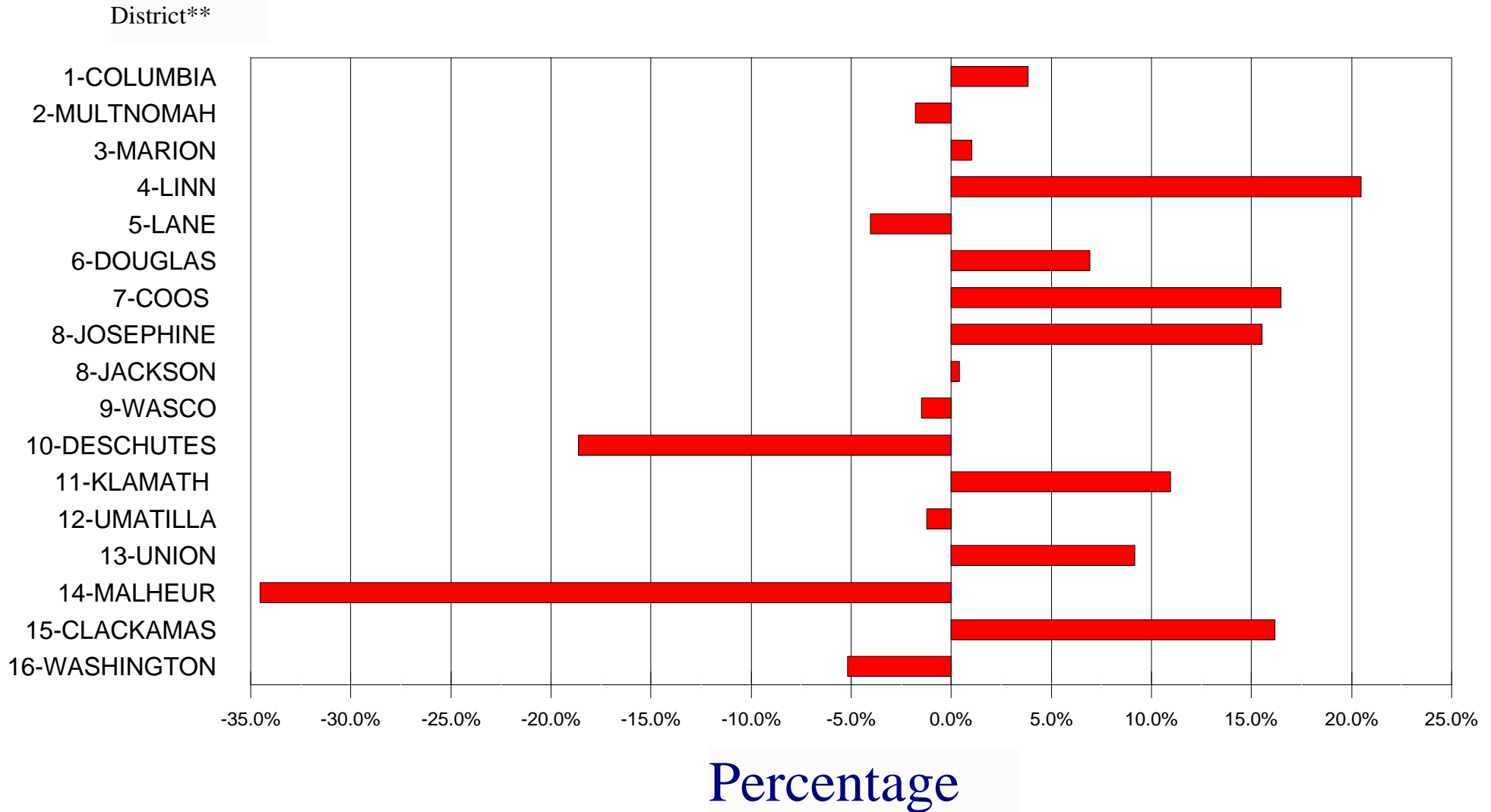
** District is listed by the most populous county in the geographic area. See page 2 for a complete listing of the counties.

Yearly % ADP Change by DISTRICT*

Children in Substitute Care

21

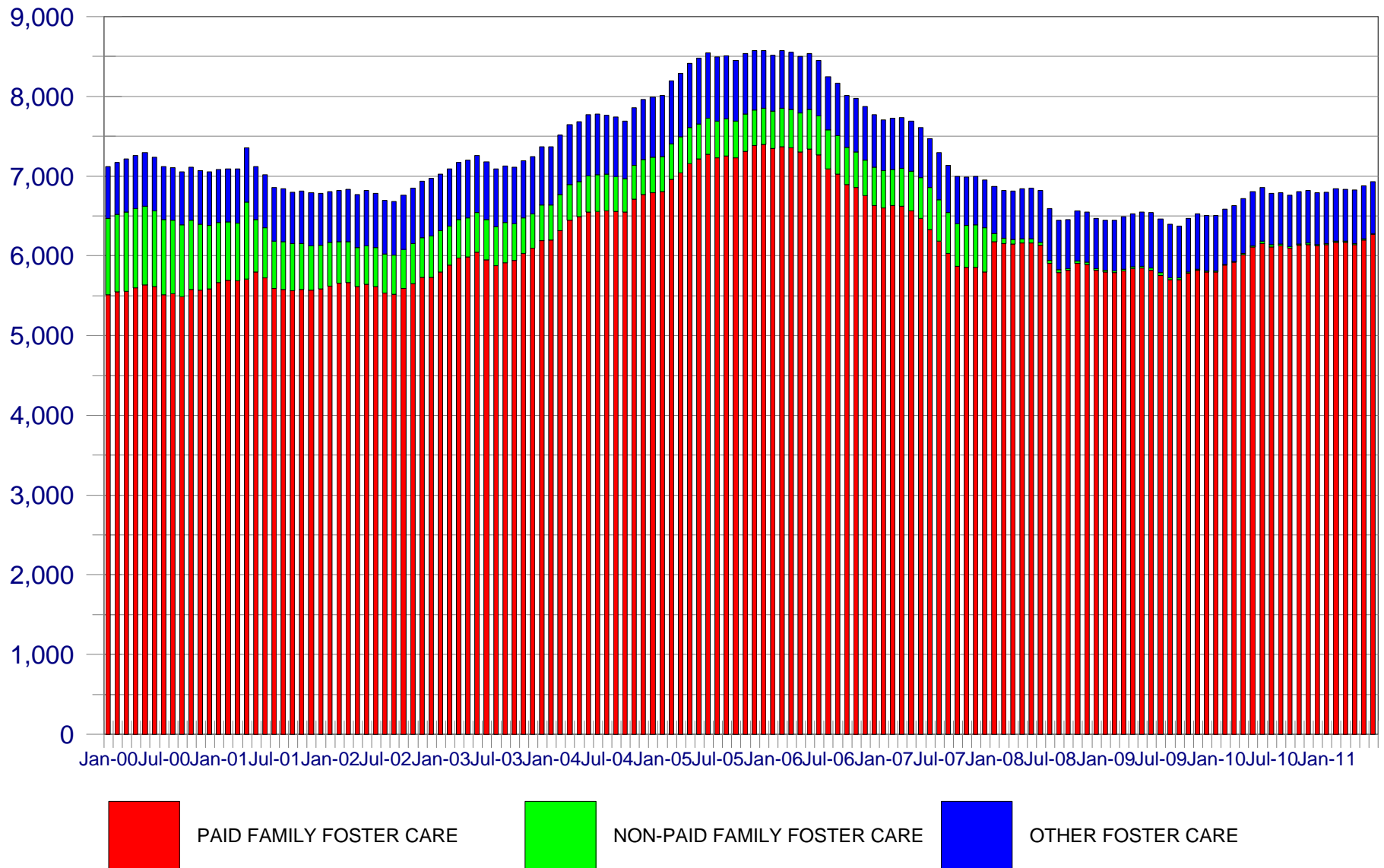
June 2010 - June 2011



*Includes Paid & Non Paid Family Shelter Care, Family Foster Care, Relative Family Foster Care, Family Group Home Care, & Residential TX

** District is listed by the most populous county in the geographic area. See page 2 for a complete listing of the counties.

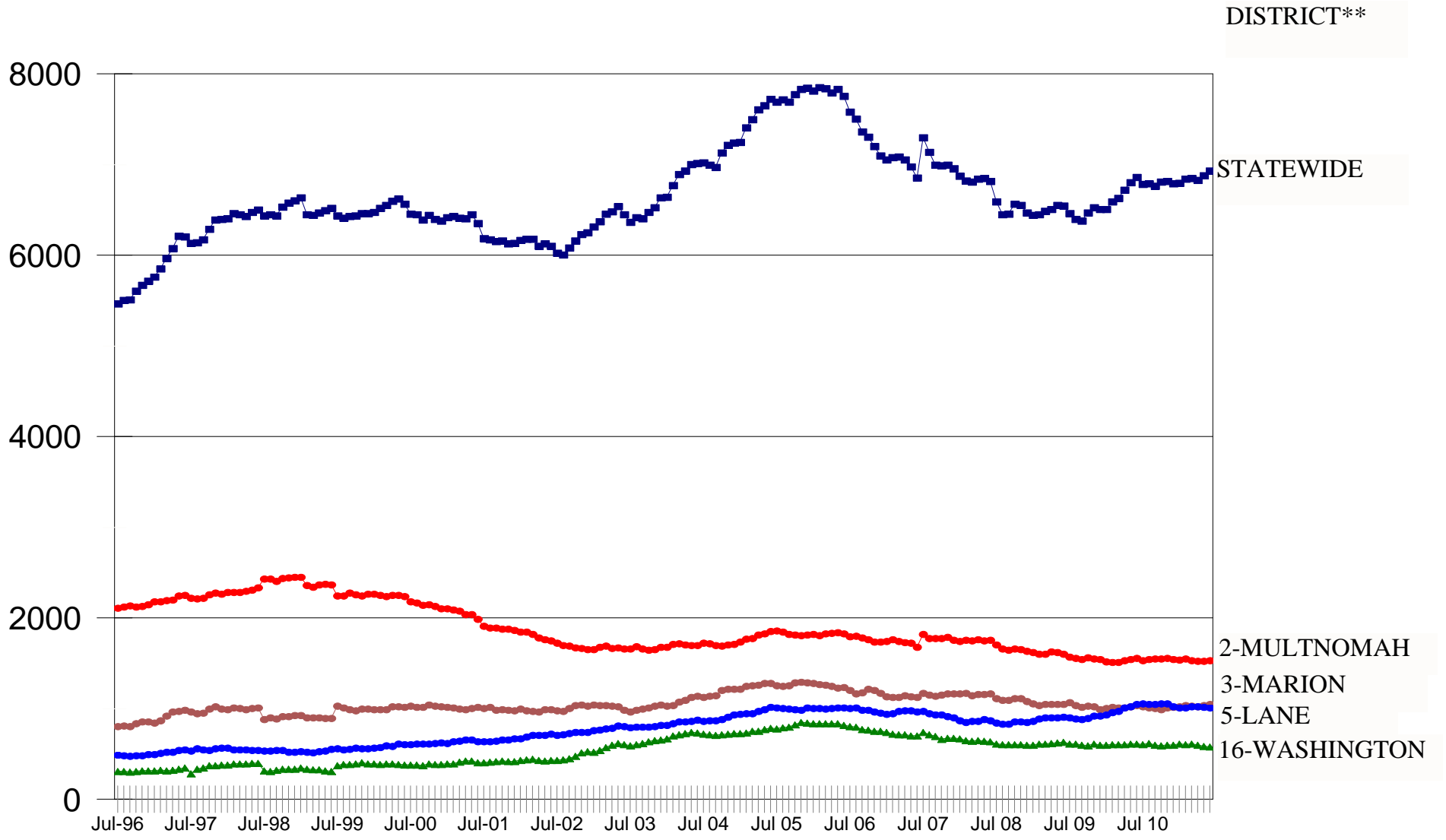
CHILD WELFARE-STATEWIDE ADP CHILDREN - SUBSTITUTE CARE-PAST 11 YRS



TOTAL FAMILY FOSTER CARE-PAST 14 YRS*

BY DISTRICT THROUGH JUNE 2011

23

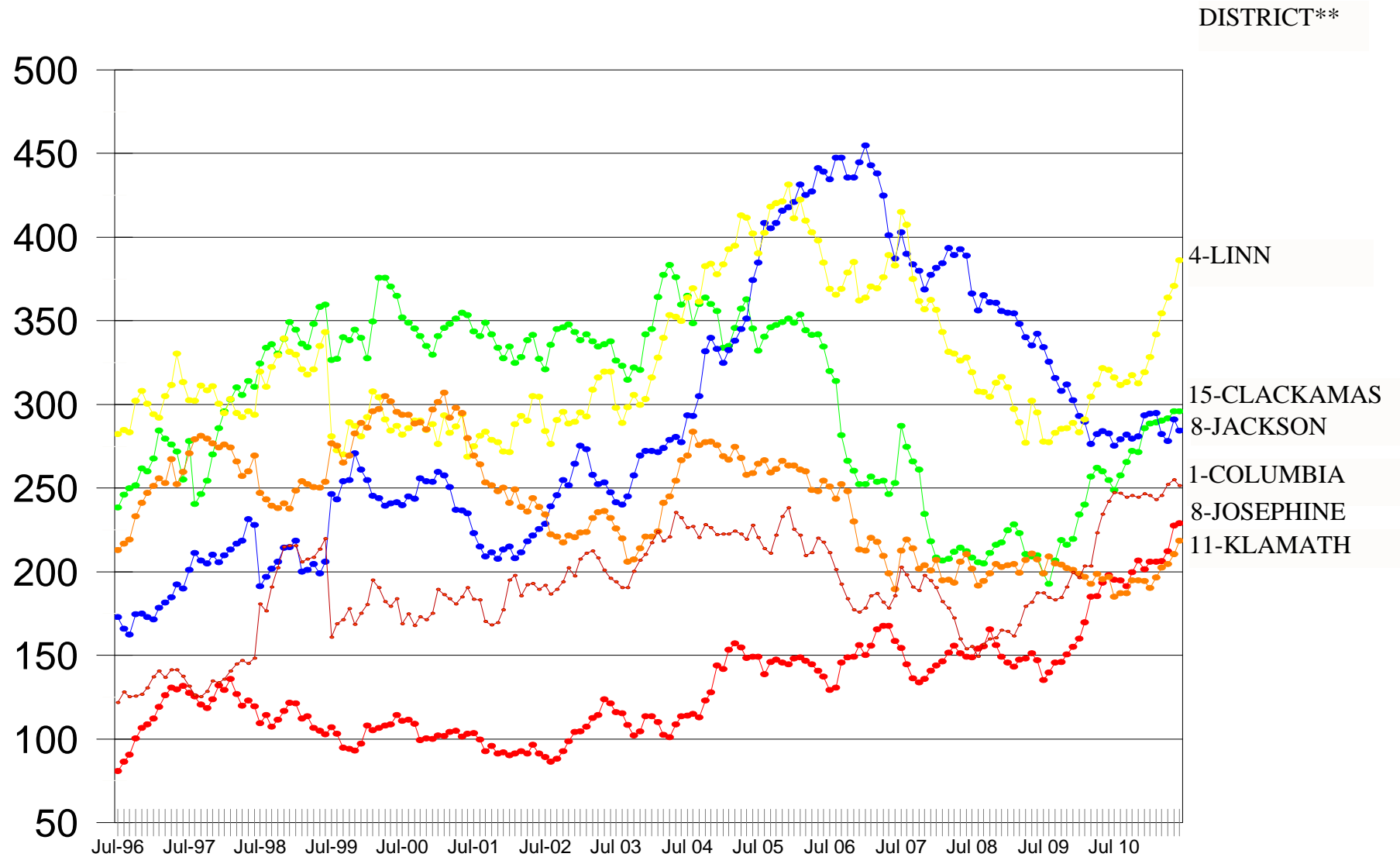


*Includes Paid & Non-Paid Foster Care, Family Shelter Care, Family Foster Care, Relative Family Foster Care, Family Group Home Care & Residential TX
 As of July 2007 this report also includes Residential Treatment Foster Care.

TOTAL FAMILY FOSTER CARE-PAST 14 YRS*

BY DISTRICT THROUGH JUNE 2011

24

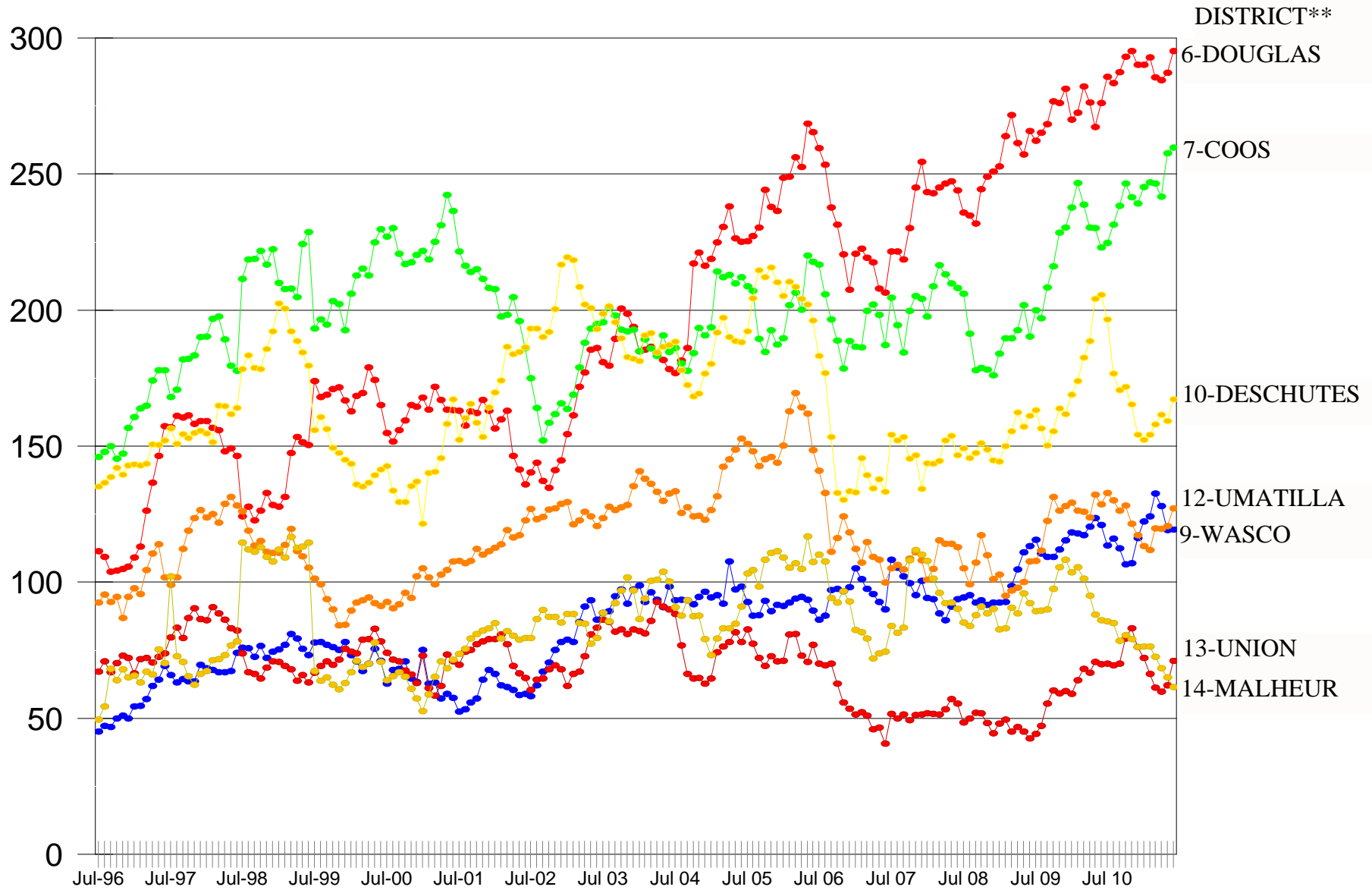


*Includes Paid & Non-Paid Foster Care, Family Shelter Care, Family Foster Care, Relative Family Foster Care, Family Group Home Care & Residential RX
As of July 2007 this report also includes Residential Treatment Foster Care.

**District is listed by the most populous county in the geographic area. See page 2 for a complete listing of the counties.

TOTAL FAMILY FOSTER CARE-PAST 14 YRS*

BY DISTRICT THROUGH JUNE 2011

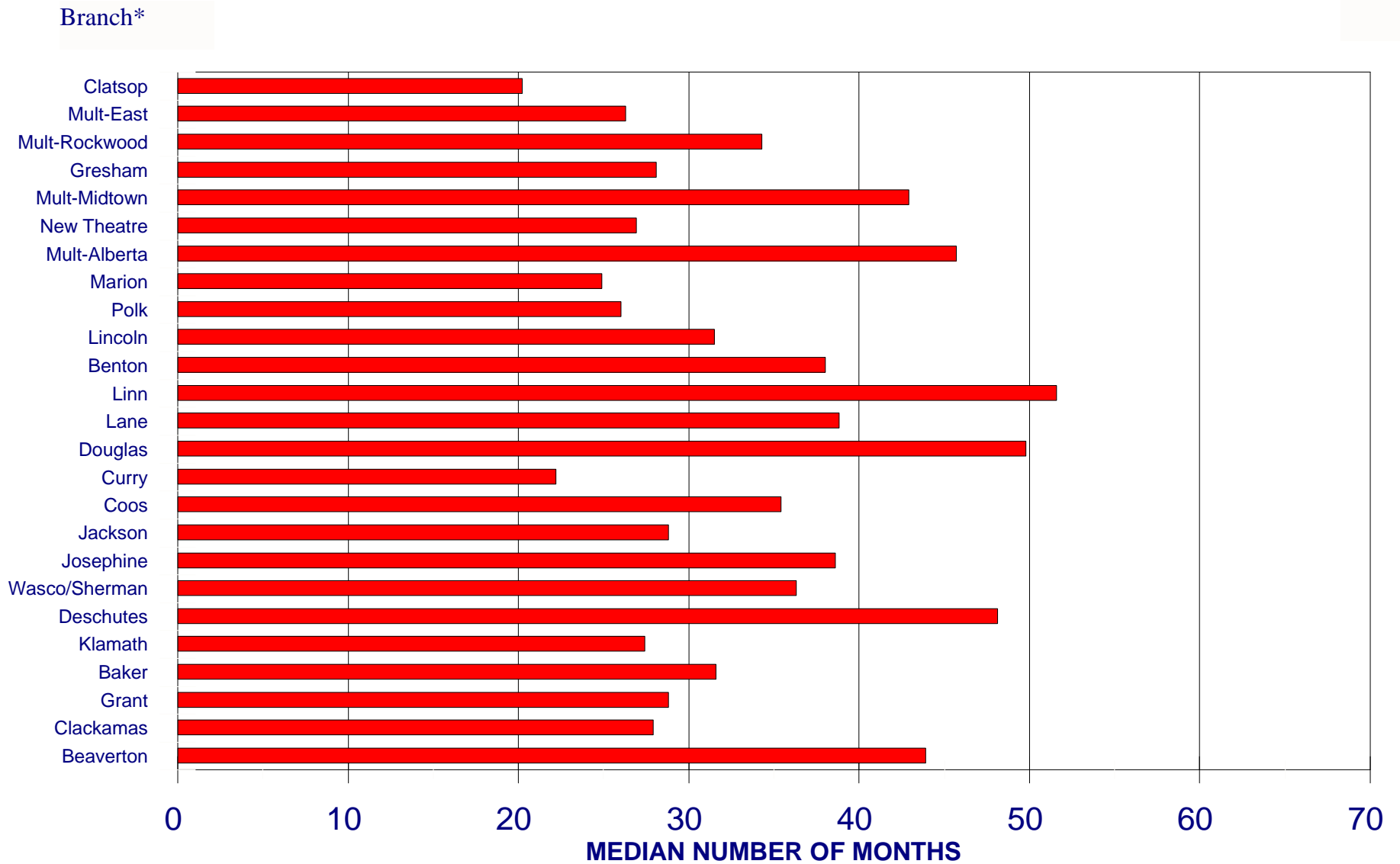


*Includes Paid & Non-Paid Foster Care, Family Shelter Care, Family Foster Care, Relative Family Foster Care, Family Group Home Care & Residential RX
As of July 2007 this report also includes Residential Treatment Foster Care.

**District is listed by the most populous county in the geographic area. See page 2 for a complete listing of the counties.

MEDIAN MONTHS TO ADOPTION

QUARTERLY REPORT - APRIL-JUNE 2011



*This chart does not include Tillamook, Yamhill, Hood River, Wheeler, Gilliam, Crook, Jefferson, Lake, Morrow, Umatilla, Wallowa, Union, Harney, or Malheur branches as they did not have any adoption data for this period of time.